

COYOTE® LCC

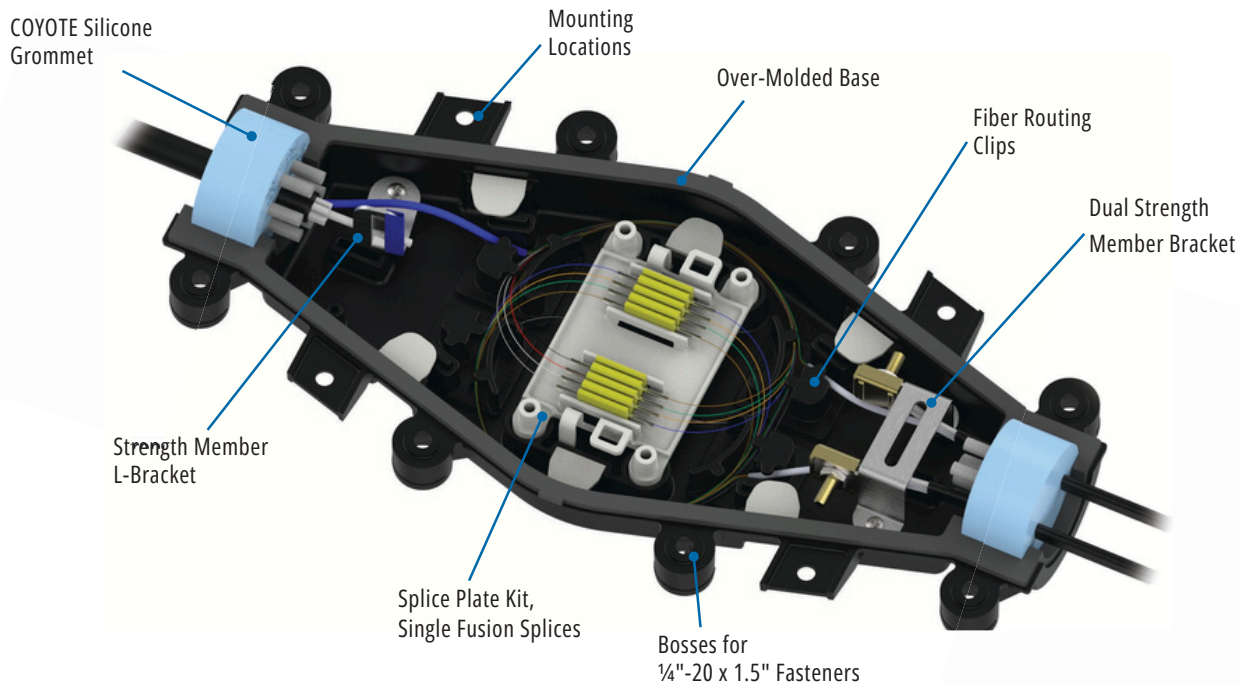
The **COYOTE LCC (Low Count Closure)** is a compact closure that utilizes the COYOTE silicone grommet system and LITE-GRIP splice platform. This rugged closure is the ideal economical solution for new drop cable installations and critical repair situations.

Features and Benefits

- Offers a cost-effective solution for quick restoration of damaged or cut fiber service drops
- Utilizes the LITE-GRIP splice block system which permits single fusion, mass fusion, mechanical, PLC splitters, or a combination of all within one closure
- Factory installed gasket allows for re-entry and reuse
- LCC halves are constructed of a UV-stabilized material
- Flexible grommet sealing technology supports a wide range of flat and round cable profiles
- Flat shape allows for mounting in small areas
- Flame-retardant and ribbon kits available
- Designed and tested in accordance to Telcordia® GR-771-CORE Buried, Underground, IP-68 Rated Requirements



The COYOTE® LCC has a durable factory installed sealing surface in both the base and the cover to simplify assembly and allow for easy re-entry and reuse. The flexible single and multi-hole COYOTE silicone grommets provide a secure seal around a variety of cable profiles and eliminates the need for scuffing, adhesives or seal tapes. The internal fiber routing clips manage bare fiber without causing signal loss. Multiple strength member brackets provide the versatility to restrain different types of cable.

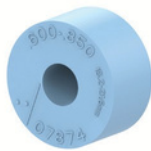


COYOTE Silicone Grommets



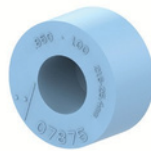
Catalog No: 8003691

0.40" – 0.60"
(10.2 – 15.2 mm)



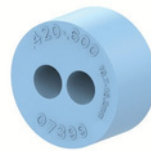
8003692

0.60" – 0.85"
(15.2 – 21.6 mm)



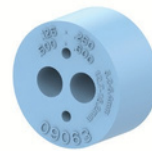
8003693

0.85" – 1.00"
(21.6 – 25.4 mm)



8003663

0.42" – 0.60"
(10.7 – 15.2 mm)



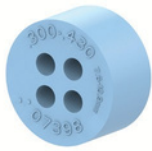
8003990

0.50" – 0.60"
(12.7 – 15.2 mm)
0.125" – 0.250"
(3.2 – 6.4 mm) and
Flat Drop



8004065

0.250" – 0.312"
(6.4 – 7.9 mm)



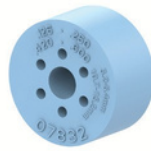
Catalog No: 8003664

0.30" – 0.43"
(7.6 – 10.9 mm)



8003665

0.125" – 0.250"
(3.2 – 6.4 mm)
and Flat Drop



8003676

0.42" – 0.60"
(10.7 – 15.2 mm)
0.125" – 0.250"
(3.2 – 6.4 mm) and
Flat Drop



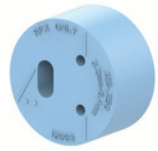
8003677

0.125" – 0.250"
(3.2 – 6.4 mm) and
Flat Drop



8004122

RPX Only

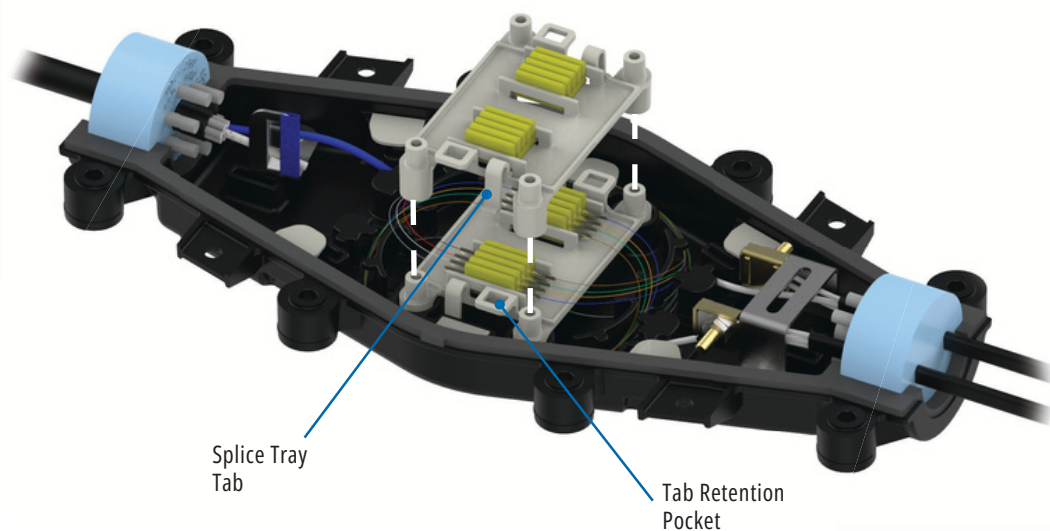


8004152

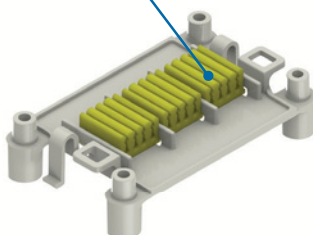
RPX
0.125" – 0.250"
(3.2 – 6.4 mm) and
Flat Drop
Aerial Applications
Only

► COYOTE® LCC Splice Platform

The COYOTE LCC has an option to add additional splice platforms to increase splice capacities - allowing for future network expansion within the same closure. The splice platform can be populated with either (3) LITE-GRIP® 8 CT. single fusion splice blocks or (2) LITE-GRIP 36 CT. mass fusion splice blocks. The mass fusion splice blocks can also accept bare fiber splitters or up to a 1x8 pre-connectorized splitter. An additional splice platform can be added by squeezing the splice tray tabs and pressing it onto the existing platform. The splice tray tab must be captured inside the tab retention pocket. The splice platform may need to be rotated 180° to align the tab with the pocket.

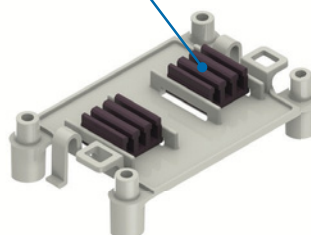


LITE-GRIP 8 CT. Single Fusion Splice Block, Yellow

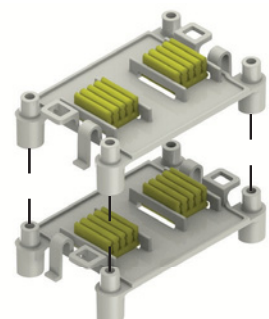


Splice Platform for Single Fusion Splices – 24 CT.

LITE-GRIP 36 CT. Ribbon/Mass Fusion Splice Block, Purple



Splice Platform for Ribbon/Mass Fusion Splices – 72 CT.

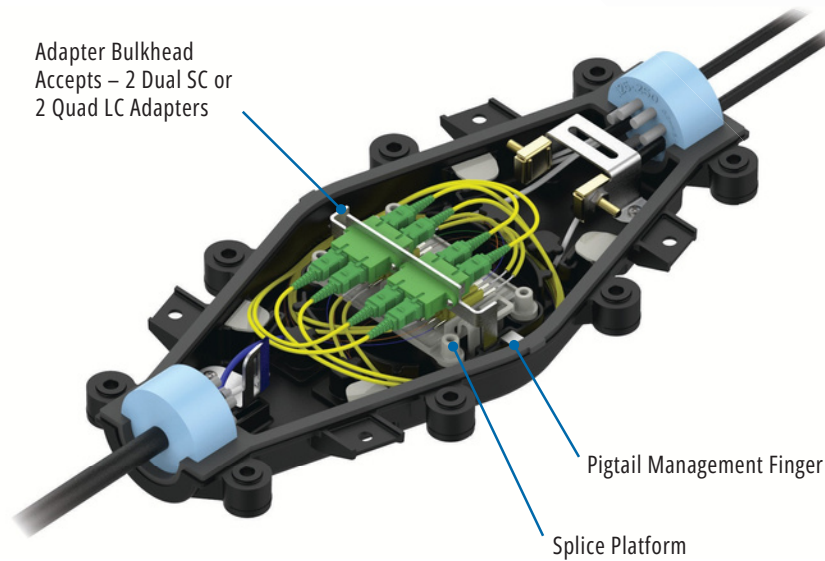


Splice Platform can be Stacked – Up to 2 Platforms per COYOTE LCC Closure



► COYOTE® LCC for Cross-Connect Applications

The COYOTE LCC can be equipped with an adapter bulkhead to support either 2 Dual SC or 2 Quad LC adapters, for plug and play applications. The adapter bulkhead sits on top of the splice platform to protect the splices and manage the pigtail routing.



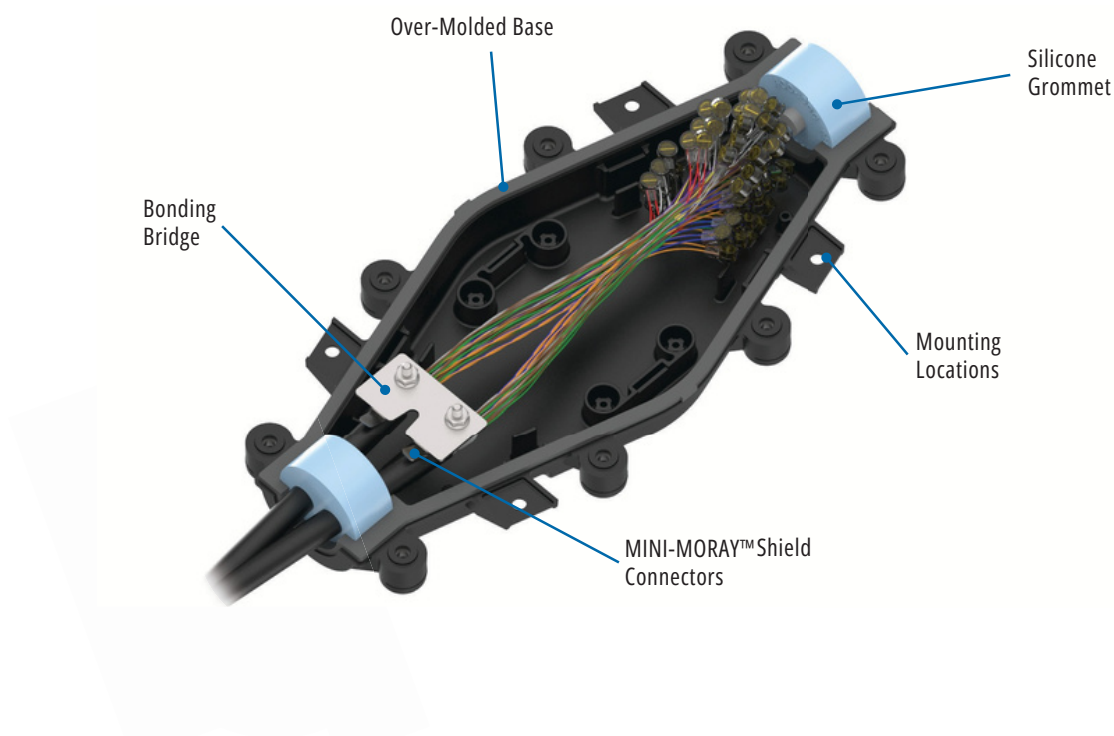
COYOTE LCC for Cross-Connect Applications Kit Contents

Catalog Number	Description
800013854	COYOTE LCC Closure for Cross-Connect Applications – Includes (1) 7-Hole Grommet [1-Hole: 0.42" – 0.60" (10.7 – 15.2 mm) and 6-Holes: 0.125" – 0.250" (3.2 – 6.4 mm) & Flat Drop Cable], (1) 8-Hole Grommet 0.125" – 0.250" (3.2 – 6.4 mm) & Flat Drop Cable NOTE: Adapters and Pigtails Sold Separately

All kits include (1) LCC Closure, (2) Grommets, (3) LITE-GRIP® 8 Ct. Single Fusion Splice Blocks, (1) Splice Platform, (1) Dual Strength Member Bracket, (1) L-Strength Member Bracket, (4) Fiber Management Clips

► COYOTE® LCC for Copper Applications

The COYOTE LCC has a compact design that makes it ideal for splicing small pair counts. The LCC can accept copper cables up to 50-pair, utilizing either 25-pair modules or Scotchlok™ connectors. The closure can be configured in either butt or in-line applications to best meet the network requirements. Each closure kit includes shield connectors and bonding hardware.



COYOTE LCC for Copper Kit Contents

Catalog Number	Description
COYLCC-C001	COYOTE LCC Closure for Copper, In-Line Applications – Includes (2) 1-Hole Grommets 0.40" – 0.60" (10.2 – 15.2 mm) and (1) Bonding Link
COYLCC-C002	COYOTE LCC Closure for Copper, In-Line Applications – Includes (2) 1-Hole Grommets 0.60" – 0.85" (15.2 – 21.6 mm) and (1) Bonding Link
COYLCC-C003	COYOTE LCC Closure for Copper, In-Line Applications – Includes (2) 1-Hole Grommets 0.85" – 1.00" (21.6 – 25.4 mm) and (1) Bonding Link
COYLCC-C004	COYOTE LCC Closure for Copper, Butt Applications – Includes (1) 1-Hole Grommet 0.40" – 0.60" (10.2 – 15.2 mm), (1) 2-Hole Grommet 0.42" – 0.60" (10.7 – 15.2 mm), and (1) Bonding Bridge
COYLCC-C005	COYOTE LCC Closure for Copper, Butt Applications – Includes (2) 4-Hole Grommets 0.30" – 0.43" (7.6 – 10.9 mm) and (1) Bonding Bridge

All kits include (1) LCC Closure, (2) Grommets, and (2) MINI-MORAY™ Shield Connectors



Specifications

Catalog Numbers	COYLCC-F001 through COYLCC-F015
Splice Capacity (Maximum) – Single Fusion, Mass Fusion	24, 72
Cable Ports ¹	2
Cable Diameters	0.093" – 1.00" (2.4 – 25.4 mm) and Flat Drop
Configuration	In-Line or Butt
Application	Direct Bury, Below Grade, Pole/Wall, Aerial
Ingress Protection	In accordance to Telcordia® GR-771-CORE, Buried, Underground, IP-68
Size	14.0" L x 6.5" W x 2.5" D (356 x 165 x 64 mm)

¹Multi-hole grommets allow for more than one cable to enter each cable port.

COYOTE LCC for Single Fusion Kit Contents

Catalog Number	Description
COYLCC-F001	COYOTE LCC Closure for Single Fusion – Includes (1) 7-Hole Grommet [1 Hole: 0.42" – 0.60" (10.7 – 15.2 mm) and 6 Holes: 0.125" – 0.250" (3.2 – 6.4 mm) and Flat Drop Cable] and (1) 12-Hole Grommet Flat Drop Cable
COYLCC-F002	COYOTE LCC Closure for Single Fusion – Includes (1) 7-Hole Grommet [1 Hole: 0.42" – 0.60" (10.7 – 15.2 mm) and 6 Holes: 0.125" – 0.250" (3.2 – 6.4 mm) and Flat Drop Cable], (1) 12-Hole Grommet Flat Drop Cable, and (1) Bobbin Kit
COYLCC-F004	COYOTE LCC Closure for Single Fusion – Includes (2) 7-Hole Grommets [1 Hole: 0.42" – 0.60" (10.7 – 15.2 mm) and 6 Holes: 0.125" – 0.250" (3.2 – 6.4 mm) and Flat Drop Cable]
COYLCC-F005	COYOTE LCC Closure for Single Fusion – Includes (2) 2-Hole Grommets 0.42" – 0.60" (10.7 – 15.2 mm)
COYLCC-F006	COYOTE LCC Closure for Single Fusion – Includes (2) 4-Hole Grommets 0.30" – 0.43" (7.6 – 10.9 mm)
COYLCC-F007	COYOTE LCC Closure for Single Fusion – Includes (1) 7-Hole Grommets [1 Hole: 0.42" – 0.60" (10.7 – 15.2 mm) and 6 Holes: 0.125" – 0.250" (3.2 – 6.4 mm) and Flat Drop Cable] and (1) 8-Hole Grommet 0.125" – 0.250" (3.2 – 6.4 mm) and Flat Drop Cable
COYLCC-F008	COYOTE LCC Closure for Single Fusion – Includes (1) 1-Hole Grommet 0.40" – 0.60" (10.2 – 15.2 mm) and (1) 8-Hole Grommet 0.125" – 0.250" (3.2 – 6.4 mm) and Flat Drop Cable
COYLCC-F009	COYOTE LCC Closure for Single Fusion – Includes (2) 12-Hole Grommets for Flat Drop Cable
COYLCC-F010	COYOTE LCC Closure for Single Fusion – Includes (1) 12-Hole Grommet for Flat Drop Cable, (1) 1-Hole Grommet 0.40" – 0.60" (10.2 – 15.2 mm), and (1) Bobbin Kit
COYLCC-F012	COYOTE LCC Closure for Single Fusion – Includes (2) 1-Hole Grommets 0.40" – 0.60" (10.2 – 15.2 mm)
COYLCC-F013	COYOTE LCC Closure for Single Fusion – Includes (1) 12-Hole Grommet for Flat Drop Cable, (1) 2-Hole Grommet 0.42" – 0.60" (10.7 – 15.2 mm), and (1) Bobbin Kit
COYLCC-F014	COYOTE LCC Closure for Single Fusion – Includes (2) 2-Hole Grommets 0.42" – 0.60" (10.7 – 15.2 mm) and (2) Dual Strength Member Brackets
COYLCC-F015	COYOTE LCC Closure for Single Fusion – Includes (2) 7-Hole Grommets [1 Hole: 0.42" – 0.60" (10.7 – 15.2 mm) and 6 Holes: 0.125" – 0.250" (3.2 – 6.4 mm) and Flat Drop Cable] and (2) Dual Strength Member Brackets

For the COYOTE LCC Flame Retardant catalog numbers, insert "FR" into the catalog number code. Ex.: COYLCCFR-F001

All kits include (1) LCC Closure, (2) Grommets, (3) LITE-GRIP® 8 Ct. Single Fusion Splice Blocks, (1) Splice Platform, (1) Dual Strength Member Bracket, (1) L-Strength Member Bracket, (4) Fiber Management Clips

COYOTE LCC for Mass Fusion Kit Contents

Catalog Number	Description
COYLCC-F003	COYOTE LCC Closure for Mass Fusion – Includes (2) 2-Hole Grommets 0.42" – 0.60" (10.7 – 15.2 mm)
COYLCC-F011	COYOTE LCC Closure for Mass Fusion – Includes (2) 2-Hole Grommets 0.42" – 0.60" (10.7 – 15.2 mm), (1) Bobbin Kit, and (1) Aerial Mounting Bracket for Strand

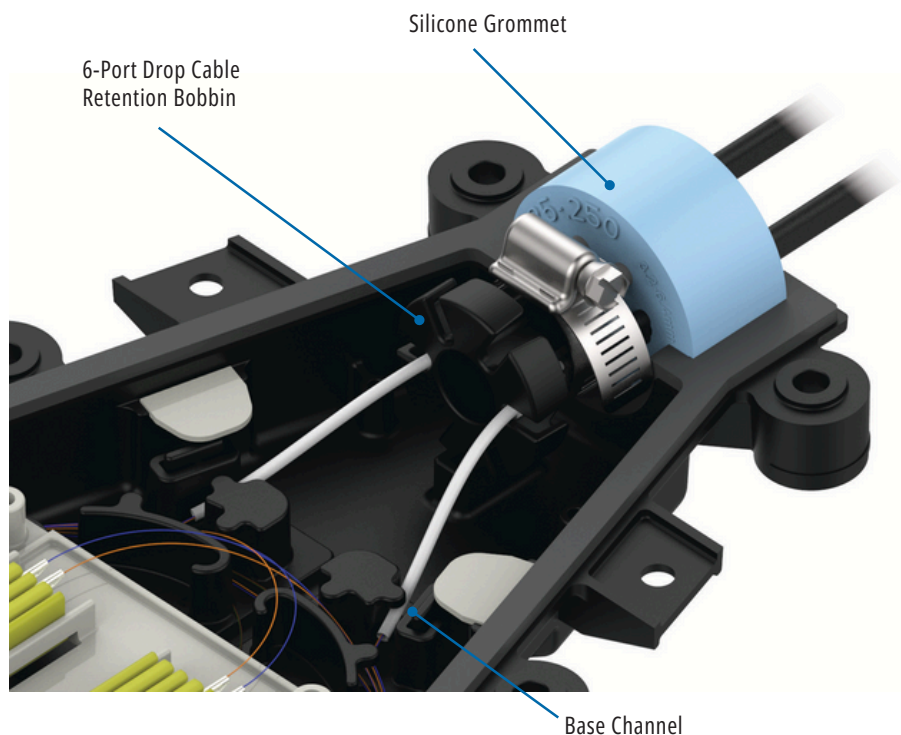
For the COYOTE LCC Flame Retardant catalog numbers, insert "FR" into the catalog number code. Ex.: COYLCCFR-F003

All kits include (1) LCC Closure, (2) Grommets, (2) LITE-GRIP® 36Ct. Mass Fusion Splice Blocks, (1) Splice Platform, (1) Dual Strength Member Bracket, (1) L-Strength Member Bracket, (4) Fiber Management Clips, (1) Transport Tube 0.25" ID x 12" Long

► COYOTE® LCC Accessories

COYOTE LCC Accessories

Catalog Number	Description
80808633 80811037 80811036	Flat Drop Cable Retention Bobbin Kit 4-Port Cable Retention Bobbin Kit 6-Port Cable
80809851	Retention Bobbin Kit Dual Strength Member Bracket Kit – Includes (1) Dual Strength
8003843	Member Bracket and (2)
COYDACSPA03	Cap/Stud Assemblies
COYDACSPA04	L-Strength Member Bracket Kit – Includes (2) L-Strength Member Brackets
80813088	Splice Platform for Single Fusion Splices – 24 CT.
	Splice Platform for Ribbon/Mass Fusion Splices – 72 CT.
	Splice Platform for Single and Ribbon/Mass Fusion Splice - 24 CT. and 72 CT.





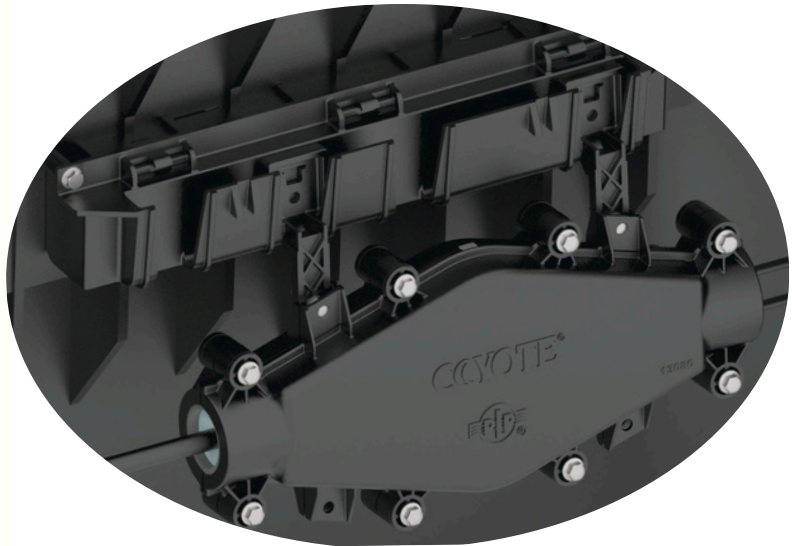
► COYOTE® LCC Mounting Brackets

COYOTE LCC Mounting Brackets

Catalog Number	Description
8003832 8003852 8003830 8003835	Aerial Mounting Bracket – Strand Applications
	Aerial Mounting Bracket – ADSS Applications
	Pole/Wall Mounting Bracket
	Handhole Mounting Bracket



Catalog Number: 8003830
Pole/Wall Mounting Bracket



Catalog Number: 8003835
Handhole Mounting Bracket